



Itinerary

Pretoria to Cape Town Route

Day 1: APPLICABLE FOR 2010 & 2011

07:50 – 08:30 Register and check-in at The Blue Train Lounge, Pretoria Station.
Guests enjoy pre-departure snacks and drinks.

08:30 Boarding starts. Butlers usher guests to their suites.
Suite orientation done by butlers.

08:50 The Blue Train departs from Pretoria Station @ 08:50 (am)

11:30 – 13:30 First sitting for Brunch
13:30 – 15:30 Second sitting for Brunch

15:30 High tea is served in the Lounge Car.

17:10 The Blue Train arrives at Kimberley Station.
Guests disembark and assemble at the railway museum, from where they will be ushered to a bus, which transfers them to the centre of Kimberley to join an old tram for a ride down to the mine.

17:45 Guests arrive at the Open Mine Museum for a tour of the mine.
Guests are first taken to view interesting and historical sites. Guests are also taken onto an enclosed ramp on the edge of the Kimberly hole.

18:35 Guests depart from the Open Mine Museum for Kimberley Station.
At Kimberley Station guests are greeted with a glass of sherry. The sherry glass engraved with The Blue Train logo is a memento for guests to keep.

19:05 The Blue Train departs Kimberley Station for the journey Southbound to Cape Town.
After this exciting tour, guests are free to refresh themselves and enjoy pre-dinner drinks served at any one of our lounges. Remember, dinner is an elegant affair and men are requested to wear a jacket and tie or dress in traditional attire and ladies in elegant evening or traditional wear.

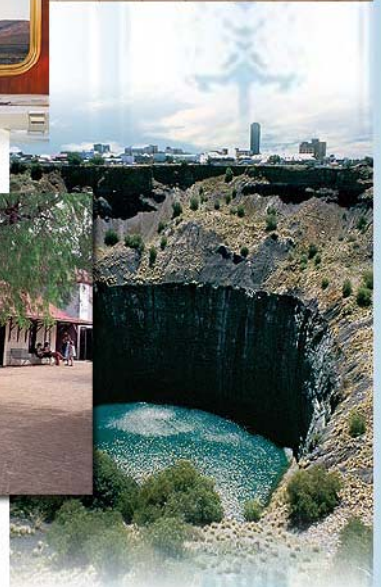
19:30 First sitting dinner

21:15 Second sitting dinner

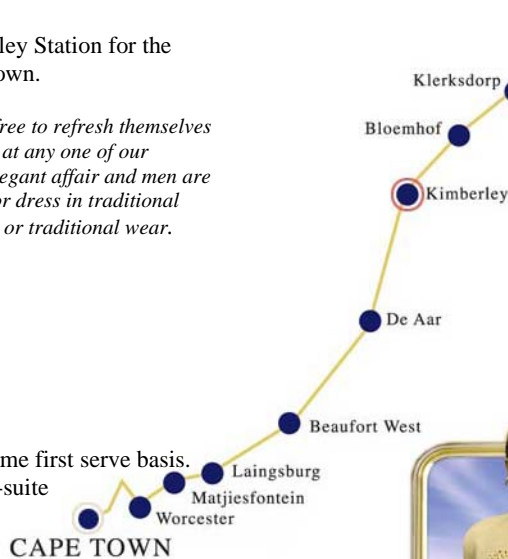
Day 2:

07:30 - 10:00 (Next morning)
Breakfast is served on a first come first serve basis. Breakfast can also be served in-suite at the guests' request.

12:00 The Blue Train arrives at Cape Town Station.
Butlers usher guests to The Blue Train Lounge



PRETORIA



THE BLUE TRAIN
A WINDOW TO THE SOUL OF SOUTH AFRICA

**Thank you for joining us
on this memorable experience!**

