



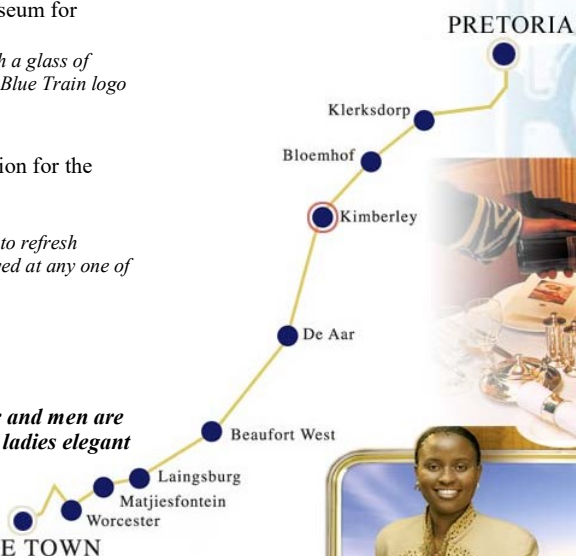
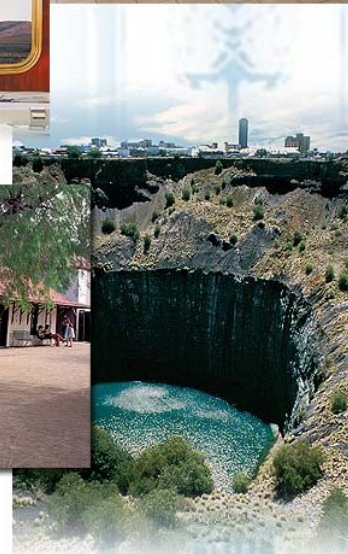
Itinerary

Pretoria to Cape Town Route

Day 1:

- 06:30** Register and check-in at **The Pretoria Station Lounge**. Guests enjoy pre-departure drinks. Welcome snacks will be served on-board the train
- 07:30** Boarding starts. Butlers usher guests to their suites. Suite orientation done by butlers.
Boarding concludes at 08:00am
- 08:30** The Blue Train departs from Pretoria Station (Will depart earlier once all guests have checked-in)
- 10:30 – 12:00** First sitting for Brunch
12:30 – 14:00 Second sitting for Brunch
- 15:30** High tea is served in the Lounge Car.
- OFF-THE-TRAIN EXCURSION**
(Weather & time-permitting)
- 17:10** The Blue Train arrives at Kimberley Station.
Guests disembark and gather at the railway museum, from where they will be ushered to a bus, which transfers them to the Kimberley Open Mine Museum.
- 17:30** Guests arrive at the Open Mine Museum for a tour of the mine.
Guests are first taken to view interesting and historical sites. Guests are also taken onto an enclosed ramp on the edge of the Kimberly hole.
- 18:35** Guests depart from the Open Mine Museum for Kimberley Station.
At Kimberley Station guests are greeted with a glass of sherry. The sherry glass engraved with The Blue Train logo is a memento for guests to keep.
- 19:10** The Blue Train departs Kimberley Station for the journey Southbound to Cape Town.

After this exciting tour, guests are welcome to refresh themselves and enjoy pre-dinner drinks served at any one of our lounges.
- 19:30 – 21:00** First sitting dinner
21:15 Second sitting dinner
- Remember, dinner is an elegant affair and men are requested to wear a jacket and tie and ladies elegant evening wear.**
- Guests enjoy post-dinner drinks, Cognacs and Cuban cigars in the Club Car before retiring to bed*



Day 2:

(Next morning)



- 07:00 - 10:00** Breakfast is served on a first-come-**THE BLUE TRAIN** first-served basis.
A WINDOW TO THE SOUL OF SOUTH AFRICA
- 12:00 – 14:45** Finger Snack Platters served at leisure (first-come-first-served) in the non-smoking Public areas
- 15:00** The Blue Train arrives at **Cape Town Station**. Butlers usher guests to The Blue Train Lounge